

YEAR

2013

LINK

LUNG WUI RD (from TIM MEI AVE to LUNG KING ST)

COVERAGE (B) STATION

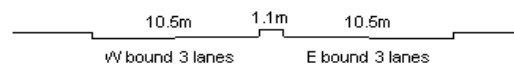
2408

ROAD NETWORK

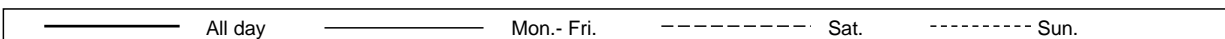
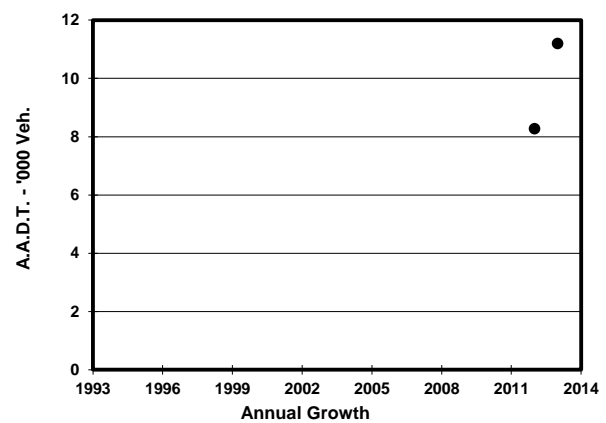
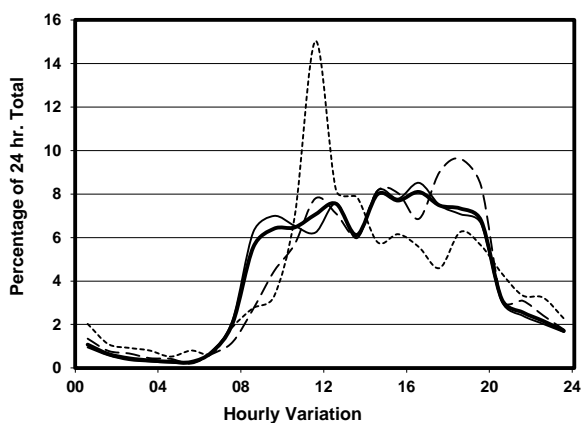
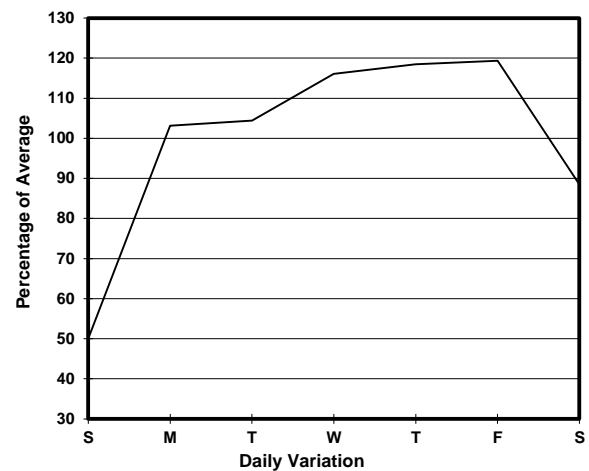
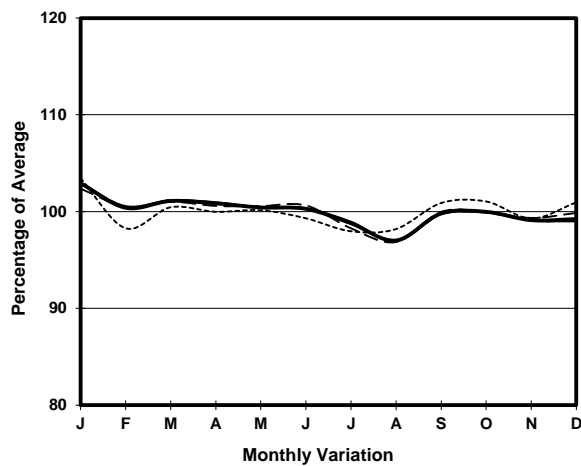
MINOR

ROAD TYPE

DISTRICT DISTRIBUTOR



1. TRAFFIC FLOW VARIATION AND GROWTH



2. TRAFFIC CHARACTERISTICS (BY DIRECTION)

Parameter	All - Day	Mon. - Fri.	Sat.	Sun.
EAST BOUND				
A.A.D.T.	6830	7770	6620	3730
R 12 / 24 - %	79.9	81.3	76.2	72.6
R 16 / 24 - %	94.6	95.2	93.8	90.2
AM Peak Hour	0900-1000	0900-1000	0900-1000	0900-1000
One-way flow at AM peak hour	430	540	270	130
T - % (AM)	-	10.7	-	-
PM Peak Hour	1600-1700	1600-1700	1800-1900	1800-1900
One-way flow at PM peak hour	570	700	690	260
T - % (PM)	-	12.1	-	-
Prop.of commercial vehicles - 16 hr.	-	11.8	-	-
WEST BOUND				
A.A.D.T.	4370	5170	3590	2030
R 12 / 24 - %	79.7	80.1	77.7	77.5
R 16 / 24 - %	94.2	94.4	93.5	92.1
AM Peak Hour	0900-1000	0900-1000	0900-1000	0900-1000
One-way flow at AM peak hour	290	360	180	60
T - % (AM)	-	14.7	-	-
PM Peak Hour	1600-1700	1600-1700	1700-1800	1600-1700
One-way flow at PM peak hour	330	400	290	110
T - % (PM)	-	10.2	-	-
Prop.of commercial vehicles - 16 hr.	-	11.7	-	-

3. OTHER INFORMATION AND COMMENT

4. Vehicle classification and occupancy - Monday to Friday

Time		Class of vehicle									
		Motor Cycle	Private Car	Taxi	Private LB	PLB	Goods veh.		Non Fr. Bus	Fr. Bus	
							Light	M & H		SD	DD
0700-0800	Pro	0.0	15.5	46.6	0.0	0.0	7.8	0.0	19.4	0.0	10.7
	Ocp	0.0	1.0	1.8	0.0	0.0	2.0	0.0	11.4	0.0	12.3
0800-0900	Pro	0.7	32.7	39.3	0.7	0.0	6.5	2.9	14.5	0.0	2.5
	Ocp	1.0	1.3	1.6	4.0	0.0	1.8	1.0	14.5	0.0	11.6
0900-1000	Pro	0.7	43.0	33.9	3.5	0.0	7.1	0.7	7.1	0.2	3.9
	Ocp	1.0	1.5	1.6	4.4	0.0	1.9	1.0	4.9	3.0	7.0
1000-1100	Pro	2.4	31.4	40.0	0.8	0.0	14.1	1.6	6.3	0.6	2.9
	Ocp	1.0	1.6	1.5	14.0	0.0	1.9	1.5	8.9	2.3	12.1
1100-1200	Pro	0.0	33.3	34.2	1.9	1.0	15.2	4.8	6.7	0.7	2.4
	Ocp	0.0	1.7	1.7	3.5	13.0	1.7	1.8	15.0	3.7	12.2
1200-1300	Pro	1.6	39.4	37.0	1.6	0.0	10.7	0.8	5.8	0.4	2.7
	Ocp	1.0	1.6	2.0	2.0	0.0	1.8	3.0	12.3	4.5	12.7
1300-1400	Pro	0.0	53.1	24.7	3.1	0.6	8.0	2.5	5.6	0.5	2.0
	Ocp	0.0	1.5	1.8	1.8	10.0	1.7	2.0	6.8	3.3	10.6
1400-1500	Pro	0.0	40.1	34.5	3.5	0.0	10.6	2.8	5.6	0.7	2.1
	Ocp	0.0	1.6	2.1	3.2	0.0	1.7	2.0	17.1	4.5	18.6
1500-1600	Pro	0.8	46.6	31.8	1.6	0.0	9.3	2.3	4.7	0.6	2.3
	Ocp	1.0	1.5	1.7	1.5	0.0	1.4	1.7	7.7	3.0	17.3
1600-1700 Peak hour	Pro	0.7	42.1	31.4	0.7	0.0	13.5	0.0	7.8	0.5	3.2
	Ocp	1.0	1.6	1.9	4.0	0.0	1.6	0.0	12.5	2.3	11.3
1700-1800	Pro	3.8	44.3	36.6	0.0	0.0	6.1	0.0	5.3	0.6	3.2
	Ocp	1.0	1.7	2.0	0.0	0.0	1.8	0.0	5.0	3.0	14.8
1800-1900	Pro	5.0	44.4	35.0	0.6	0.6	5.6	0.0	6.9	0.3	1.6
	Ocp	1.4	1.5	2.1	1.0	13.0	2.0	0.0	19.7	3.0	24.2
1900-2000	Pro	1.1	48.9	35.6	0.0	2.1	1.6	0.0	8.5	0.5	1.6
	Ocp	2.0	1.5	2.0	0.0	10.5	3.0	0.0	8.8	1.3	17.9
2000-2100	Pro	0.0	57.1	29.2	0.0	0.0	1.3	2.5	5.1	1.0	3.8
	Ocp	0.0	1.4	1.8	0.0	0.0	1.0	2.0	8.3	2.0	12.8
2100-2200	Pro	0.0	45.4	41.1	0.0	0.0	4.3	0.0	2.2	1.1	5.9
	Ocp	0.0	1.2	2.0	0.0	0.0	2.0	0.0	28.0	2.0	11.8
2200-2300	Pro	0.0	47.4	42.1	0.0	0.0	0.0	0.0	2.6	1.3	6.6
	Ocp	0.0	1.7	1.9	0.0	0.0	0.0	0.0	30.0	2.0	14.6
16 hours	Pro	1.3	42.7	34.6	1.3	0.4	8.0	1.4	7.0	0.5	2.8
	Ocp	1.2	1.5	1.9	3.4	11.1	1.8	1.7	11.6	2.8	13.4

Legend

Pro. Proportion of vehicles in % (Sum may not add up to 100% due to figure rounding)
Ocp. Average occupancy of vehicles
M&H Medium and Heavy